

The specification of product (MINI GPS+GSM)

I FUNCTIONS

- (1) 1. GPS+GSM locator—dual , Two kinds of location information, user could locate the precise location by GPS. At those place where there is no GPS signal, user could also locate the car by CPS system(located by GSM network); mini-tracker, easy to cover.
2. The built-in rechargeable battery has more than a life of 96 hours.
3. car alarm.
4. telecontrol:
 - 1) arm, disarm,state, ect
 - 2) Cut off the car power/fuel supply , to stop the car.
5. It can remind you when the alarm of the power-off and low power of the built—in battery.
6. Support the internet checking software.

II installment

1. The process before the installment.
 - A. checking the list : open the package, according the packing list, check whether the device model number correct or not. Check the accessories, the packing list including: the device, wiring of the power. GPS antenna, GSM antenna, circuit breaker, spcification.)
 - 2) check the SIM CARD.(prepared by the user)

One devicde need one SIM CARD., franchiser can give the idea when choose the SIM CARD.

Use the telephone to check the CARD(cancel the power-on password, test the telephony features, incoming call, send and receive the SMS deatures.)

III. GPS antenna siting and fixed

- 1) To make sure the receiving surface point to the air before install the GPS antennna,meanwhile, to make sure nothing no the receiving surface(like metal)
- 2) the best position to install the GPS antennna

- a) Hidden beneath of the windscreen
- b) under the dashboard(Non-metallic materials for the epidermal)
- c) under the back windscreen
- d) in the Front bumper
(Non-metallic materials for the epidermal)
- e) under Wipers board
(Non-metallic materials for the epidermal)

Warn : If the windscreen paste with metal or heat-insulating layer, the GPS receiver signal will be reduced,So Pls replace the GPS antenna's install location

3) Don't removed the GPS antenna shell,because the antennna can adsorb on metal objects. And you have better to use the Strong double-wide plastic sponge to protect it

4)

Pls put the GPS lead around the core and make sure the plug of the antenna in the correct persition.

IV、GSM antenna siting and fixed

1) the best position to install the GSM antennna

- : a) under the dashboard
- b) in the Front bumper
- c) under the sate.

2) Pls put the GSM lead around the core and make sure the plug of the antenna in the correct persition.

Warn, Don't put tht GSM antenna and GPS antenna together. To aviod the obstruction. Keep away from the sound box

V Install the SIM CARD.

On right side of the device, press the yellow button, put in CARD in the CARD BOX, and close the CARD BOX.(put in SIM card in the correct direction.)

Warn: SIM BOX equal to the power switch. Install the CARD BOX(which had SIM CARD) in the device. Just put out the CARD BOX when you finish the device.

VI Setup the parameter:

Control by the user' s phone.

SMS Control Instructions

The format of the instruction is:"user password(123456)+ control code(XX)"

The default user password is 123456.

XX is the control code, it could be capital letter or small letter.

There is no space between the user password & the control instruction.

- **123456PSWnnnnnn**

This instruction is used to change the user password. The length of the user's password is 2~6 digits. User are suggested to change to the new password in use.

- **123456STP**

This instruction is to cut off the car's power supply or fuel supply, so as to stop the car. The car lights will flash, the siren will sound. The car will be controlled to stop gradually.

Attention: It is very dangerous to cut off power when the vehicle is running. We do not take any responsibility to the consequence caused by this action.

- **123456RES**

This instruction is to restore the car to normal status after stopping the car.

- **123456CHK**

This instruction is to inquiry the system status & information.

The system will send back the SMS, includes the similar information as "Arm setted, vehicle position:"

VII Samples for the command.

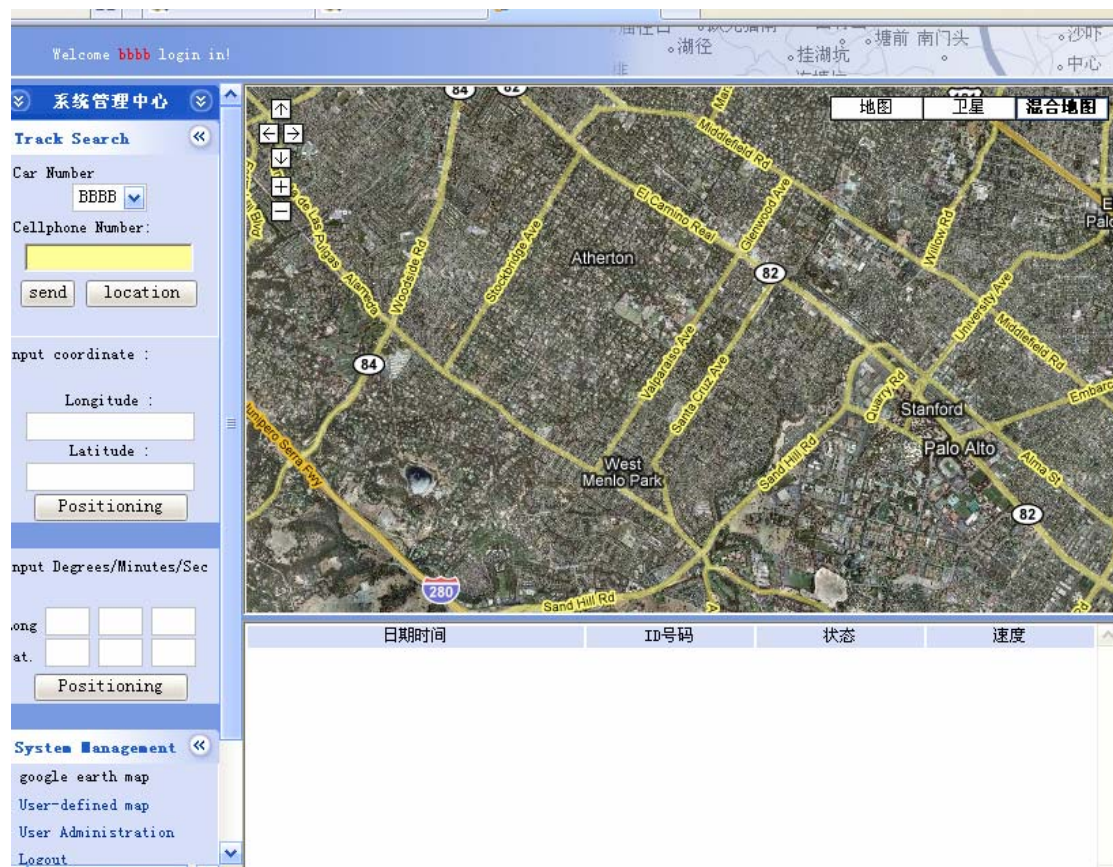
Sample A: User sends the SMS "123456PSW1234" to the system SIM card number, and gets the confirmation SMS "123456PSW1234" in 10 seconds. It means that the user password has been changed to 1234.

Sample B: User sends the SMS “1234SHK” to the system SIM card number, and gets the confirmation SMS “vehicle state [XXXX] persition [ABCDEFGH]”. [XXXX] is the vehicle state, [ABCDEFGH] including the longtitude and latitude, the signal from the phone base station, If the device can’t receive the GPS signal , it will display the signal from the phone base station,

Sample E : Support the internet software,

Track by the Management Software

The management center could supervise all the car’s location on time. And it could translate the professional SMS message into friendly information



- (2) Go to Web <http://gsm110.vicp.net/e/> User Name: bbbb Password: aaa , Login
 Input Degrees/Minutes/Sec Long and Lat, than Positioning
 First: You send 11111CHK to your car SIMCARD; will receive one message, and add:

Input coordinate :

Longitude :

Latitude :

Attention: the first Cellphone Number only use In China,you do not add.