

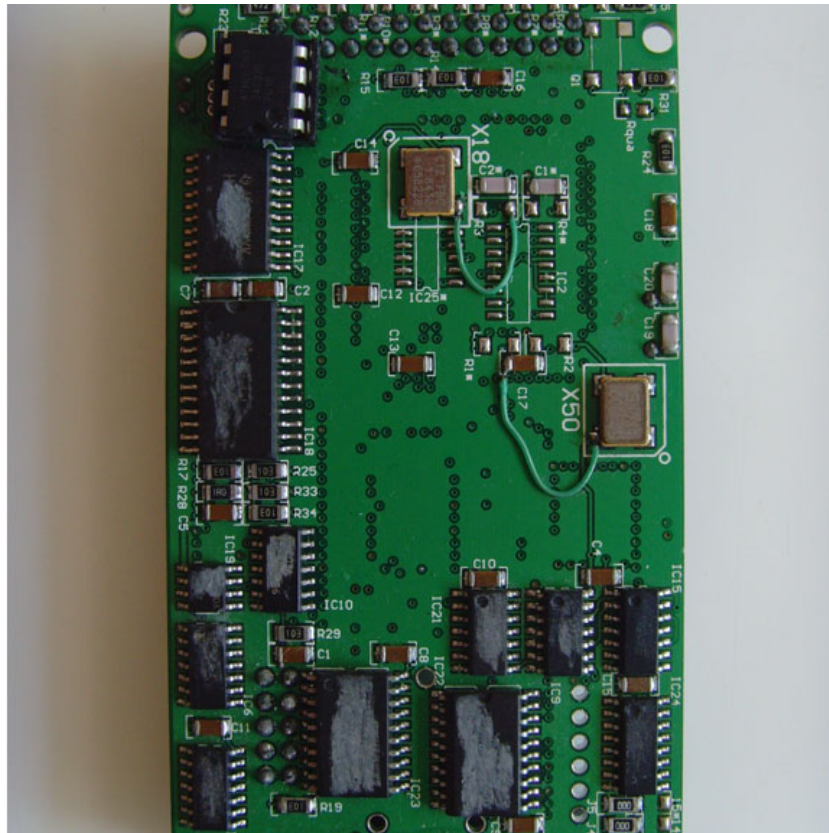
# TACHOPRO Update Manual

## Package contains:

- - EN29F040,2PCS,IC111&IC112
- - AT24C02 1PC
- - PIC12P629 1PC
- - CD-ROM that includes Update Tool

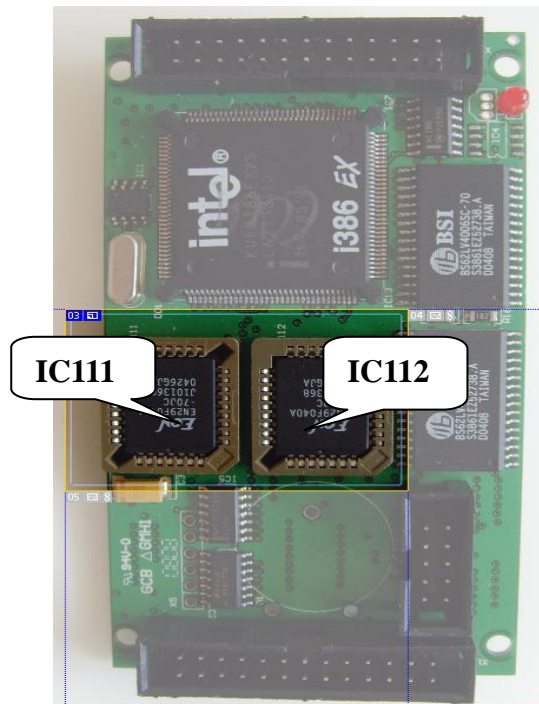
## Update methods:

1. Remove the CPU BOARD from TACHOPRO i.e. the principal machine. See picture 1.



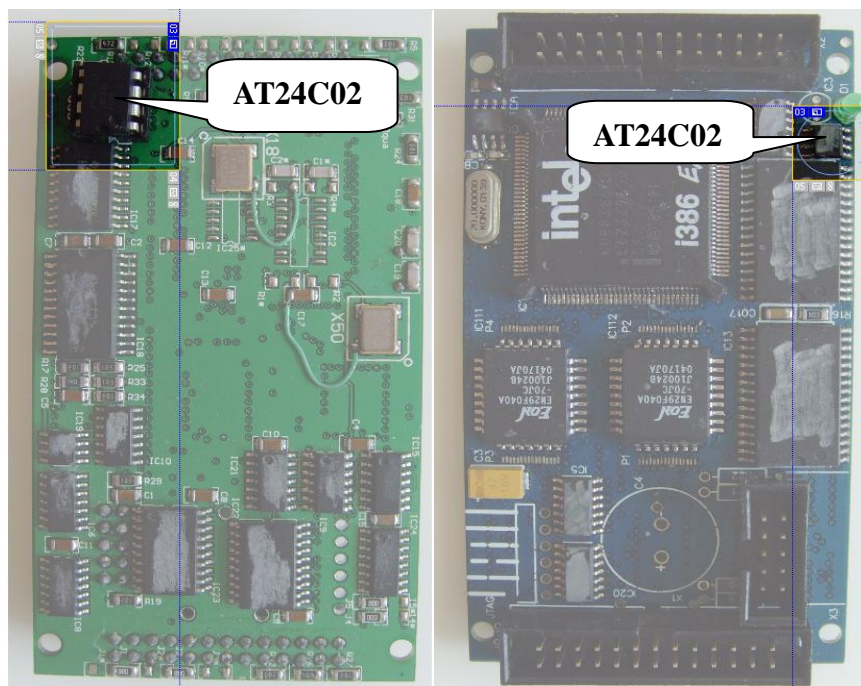
Picture 1

- Find the location of IC111& IC112 and replace the previous IC on CPU BOARD with the IC111&IC112 of Update Kit. Make sure the IC is properly located with correct direction. See picture 2



Picture 2

- Find AT24C02 on CPU BOARD. Remove the previous IC by using electric iron and then place AT24C02 on the corresponding location to guarantee the direction of IC. See picture 3A, 3B.

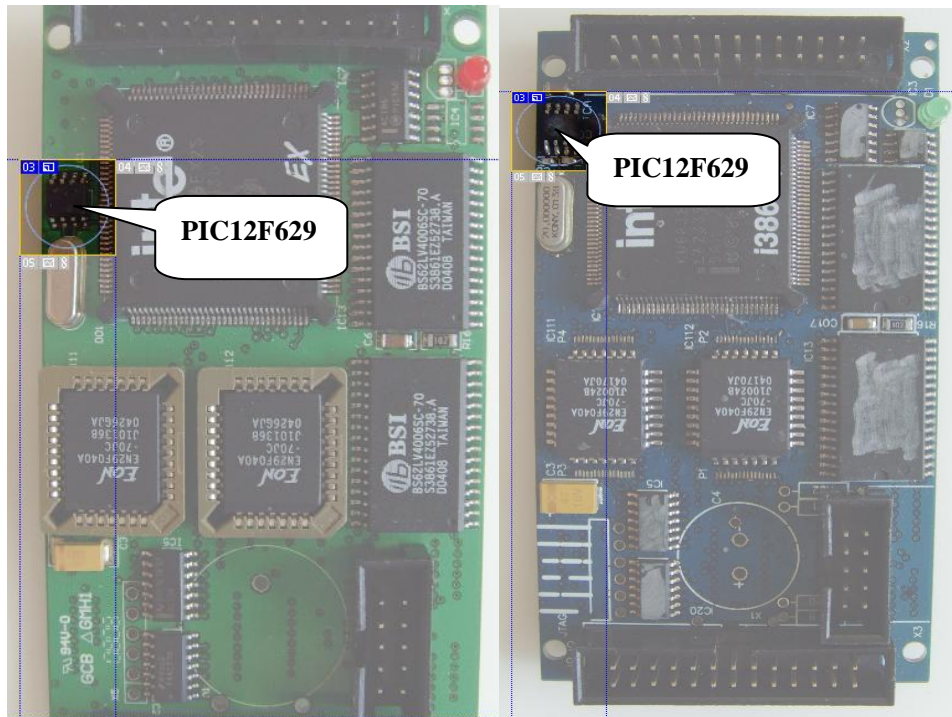


Picture 3A

picture 3B

Note: pay attention to CPU BOARD in picture 3A. First of all, the IC socket should be taken out from AT24C02 and then weld AT20C02 to the specified position in picture 3B.

4. Find PIC12F629 on CPU BOARD. Remove the previous IC by using electric iron and then place PIC12F629 on the corresponding location to guarantee the direction of IC. See picture 4A, 4B.



Picture 4A

picture 4B

5. The update will be finished by returning CPUBOARD to the principal machine.